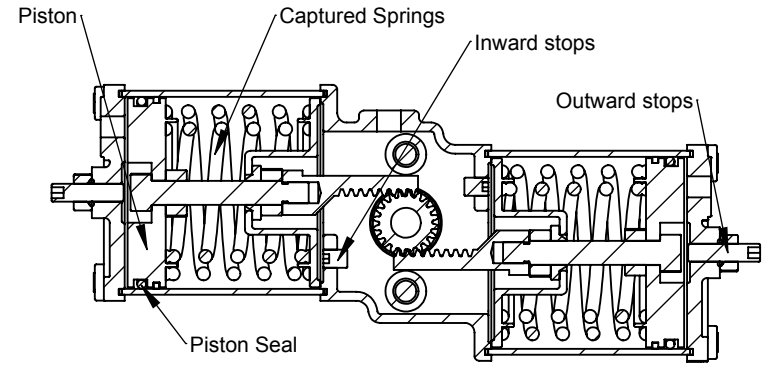
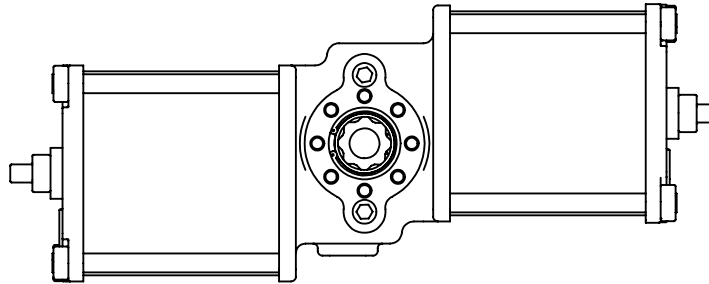
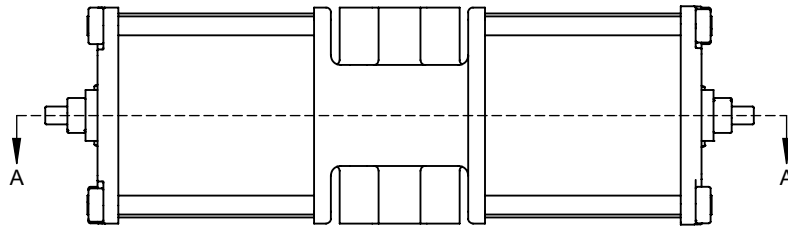
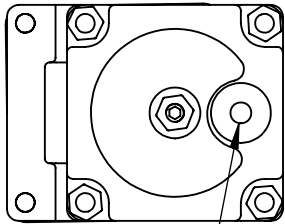


In this view, applying pressure to the end cap pressure ports will compress the springs and push the pistons inward causing counter-clockwise rotation of the drive shaft. This is typical for a Fail Closed application. Turn actuator top side down for Fail Open operation.

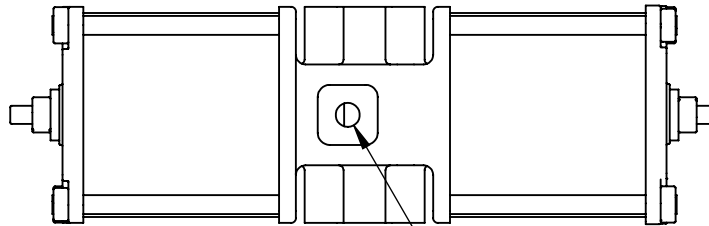


SECTION A-A

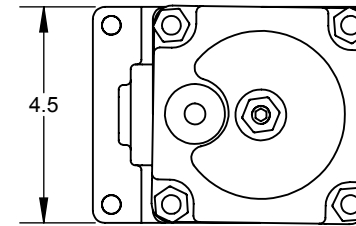
Center of Gravity is at the precise center of the actuator



1/4 NPT Pressure port
Both end caps
3/8 NOT & 1/2 NPT
Options for high speed

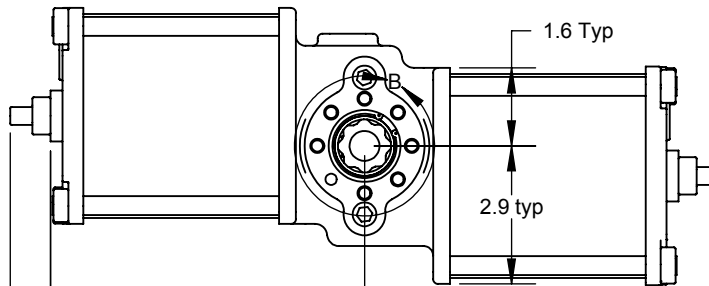


1/4 NPT Breather port



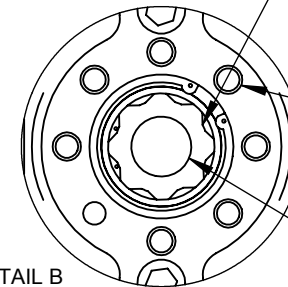
4.5

0.87: Double Square x 1.5" Deep
Female drive on both sides of
actuator. Each side is convertible to
standard NAMUR #1 male geometry
via Q05 Top Hat and Face Plate.



1.6 Typ

2.9 typ



DETAIL B
SCALE 1 : 2

ISO 5211 F05 BCD
Qty 8, M6-1 x 1/2" Dp holes
on 1.97" BCD
Both top and bottom sides

5/8" Diameter hole
thru the shaft

.8 Typ

6.5 Typ

DIMENSIONS ARE IN INCHES
TOLERANCES except as shown
FRACTIONAL: ±
ANGULAR: ±
2 PLACE DECIMAL: ±
3 PLACE DECIMAL: ±

	NAME	DATE
DRAWN	EH	1/9/08
Rev B		
Rev C		
Rev D		
Rev E		

QTRCO, Inc.

Dimensional Drawing
QD05SR and QS05SR

PROPRIETARY AND CONFIDENTIAL

THE INFORMATION CONTAINED IN THIS DRAWING IS THE SOLE PROPERTY OF QTRCO, INC. ANY REPRODUCTION IN PART OR AS A WHOLE WITHOUT THE WRITTEN PERMISSION OF QTRCO, INC. IS PROHIBITED.

MATERIAL
PROCESS
DO NOT SCALE DRAWING

SIZE **A** DWG. NO. QD05SR-DIM-001A

WEIGHT (Pounds): 29

SHEET ____ OF ____
1 of 1 if not shown