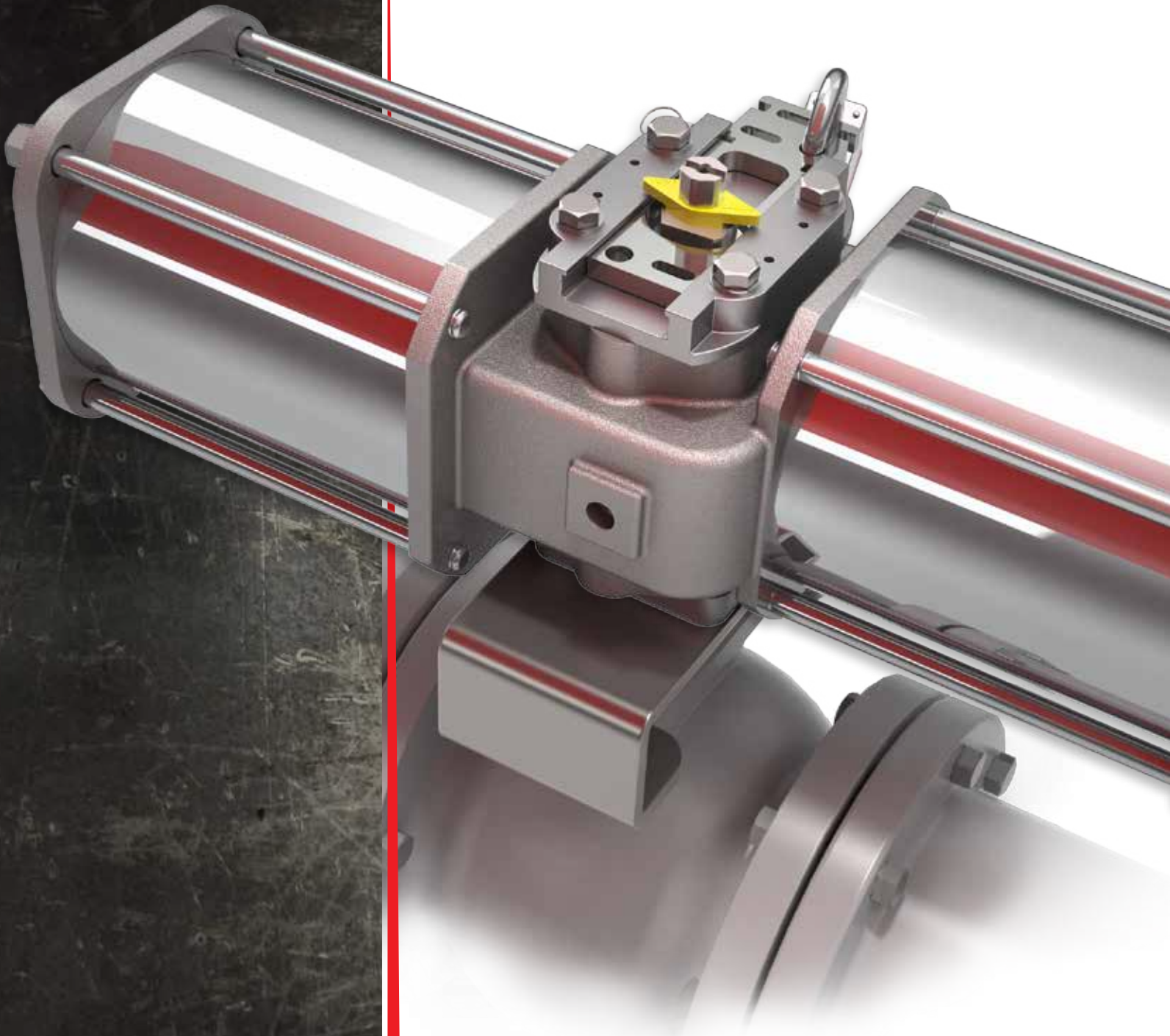


## TMX Partial Stroke **Solution**

The top mounted hard travel stop that does not require a special actuator or coupler.  
The simplest and lowest cost partial stroke testing device (PSTD) on the market.



**The Leader in Actuator Technology**

---



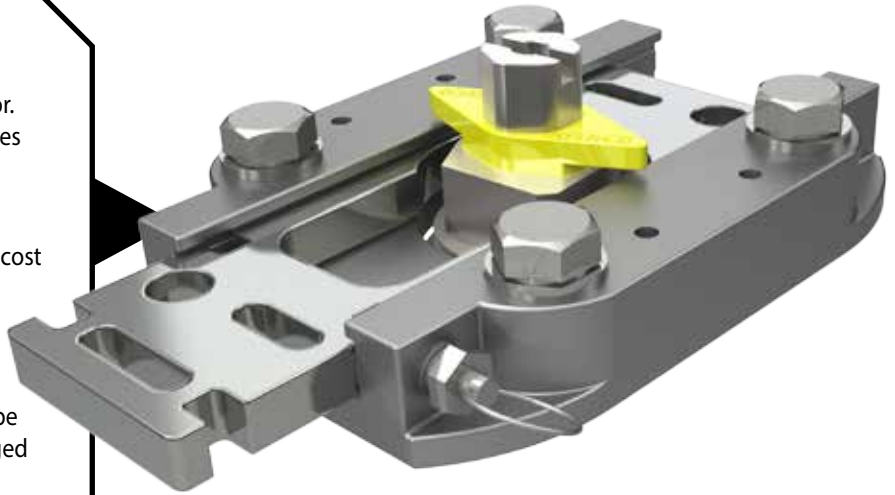
## TMX SOLUTION

The QTRCO TMX Solution is a top mounted hard travel stop that is manually engaged by the operator. Unlike other mechanical partial stroke testing devices (PSTDs) the TMX Solution does not require a special actuator or coupler.

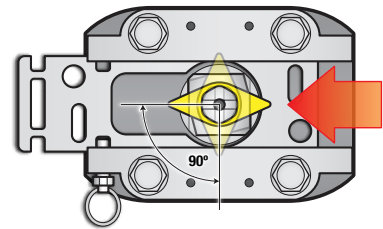
The TMX is for users who desire the lowest possible cost partial stroke testing device. The simple mechanical approach is lockable for assurance against unauthorized engagement. Engaging the top mounted slide limits the actuator rotation to a standard 15° or user specified value. Padlocks may be used to secure the slide in the engaged or disengaged position to prevent unauthorized use.

### POSITIVES:

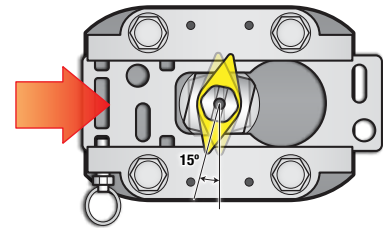
- Low cost, simple, lockable
- Allows application of the full actuator torque to overcome sticking valves
- No special couplers needed
- Enables any Q Series QTRCO actuator (existing or new) for partial stroke testing
- Tag-Out/Lock-Out capability



TMX not engaged  
normal full travel



TMX engaged  
travel limited to 15°  
(or specified amount)



## Q SERIES - ACCESSORIES

### JACKSCREW MANUAL OVERRIDE

The jackscrew is a simple low cost manual override that can be fitted on any Q Series Rack & Gear™ actuator.



### NAMUR ACCESSORY MOUNTING

Full NAMUR accessory mounting capability is retained as shown here with the QTRCO produced NAMUR cast bracket.



### PNEUMATIC PSTD: THE XRCISER™

We can equip any existing Rack & Gear™ or Flat Yoke™ actuator with tandem pistons to serve as pneumatically engaged travel stops. For more information visit: [www.qtrco.com](http://www.qtrco.com)



13120 Theis Lane  
Tomball, TX 77375  
(281) 516-0277

888.ACTU.8.IT  
888.228.8848

[www.qtrco.com](http://www.qtrco.com)  
Email: [actu8it@qtrco.com](mailto:actu8it@qtrco.com)