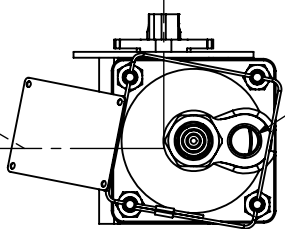


COGy = 0.50



PRESSURE PORT 1 (P1)

COGx = 0.06

SHOWN WITH NAMUR MOUNTING PLATE AND ACCESSORY DRIVE. IDENTICAL MOUNTING PATTERNS AND SHAFT DRIVE EXIST ON BOTH SIDES. NAMUR ACCESSORIES MAY BE MOVED TO OPPOSITE SIDE.

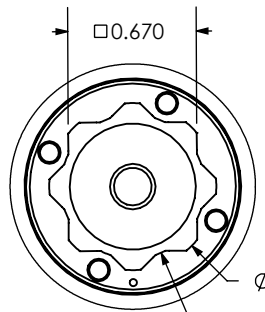
MOUNTING PATTERNS: F05

SHAFT: 17MM FEMALE DOUBLE SQUARE, 1,300 INCHES DEEP (MEASURED FROM MOUNTING SURFACE)

PORT SIZES AS ORDERED, 1/4 NPT STANDARD

CoG MEASUREMENTS CALCULATED WITH 6-INCH HANDWHEEL IN EXTENDED POSITION

SHOWN WITH 6-INCH DIAMETER ELEVATED HANDWHEEL. ACTUAL SIZE MAY VARY AS ORDERED.



DETAIL A  
SCALE 1 : 1



REV.	DESCRIPTION	DATE	DRAWNBY
A	INITIAL	19-JAN-2015	JRH
B	CORRECTED NOTES TO SHOW F05 PATTERN ONLY	07-Apr-2016	

STATUS	APPROVAL
Released	JRH 07 Apr 16

Except as shown, Dimensions are inches and standard Tolerances are:  
 Fractional +/- N/A  
 Angular +/- N/A  
 1 Decimal +/- N/A  
 2 Decimal +/- N/A  
 3 Decimal +/- N/A

DESCRIPTION

DO NOT SCALE DRAWING  
**PROPRIETARY AND CONFIDENTIAL**  
 THE INFORMATION CONTAINED IN THIS DRAWING IS THE SOLE PROPERTY OF QTRCO, INC. ANY REPRODUCTION IN PART OR AS A WHOLE WITHOUT THE WRITTEN PERMISSION OF QTRCO, INC. IS PROHIBITED.

MATERIALS AS SPECIFIED BY PRODUCT LINE STANDARDS AND ORDERED OPTIONS. WEIGHT SHOWN WITH HEAVIEST MATERIAL OPTIONS.

DWG. NO.	REVISION
<b>Qx203SR-JR-DIM-01</b>	B
WEIGHT (Pounds): 12.136	SHEET 1 OF 1 1 of 1 if not shown